

## Local Regulations

Lake County Indiana has a Stormwater Ordinance #1365C whereas no person shall discharge to a storm water conveyance any substance other than storm water or an exempted discharge. Any person discharging stormwater shall effectively minimize pollutants to the maximum extent practicable through the use of best management practices (BMPs). Any person who discharges into a water body any substance other than stormwater or an exempted discharge, shall immediately inform the Local Fire Department concerning the discharge shall be submitted to the Fire IDEM, by the discharge. A properly reported discharge shall be an affirmative defense from Ordinance against a discharge for such discharge. Any person found in violation may, be subject to:

- CIVIL INFRACTION
- FINES
- STOP WORK ORDERS
- ACCESS TO STORM WATER DRAINAGE SYSTEM TERMINATED.



An illicit discharge is any discharge to the storm sewer system that is not composed entirely of rain water or ground water.



## Lake County, Indiana MS4

Lake County Government Center  
Office of the Lake County Surveyor  
2293 North Main Street  
Crown Point, Indiana 46307  
(219)755-3753  
(219)755-3750 fax  
[www.lakecountyin.org](http://www.lakecountyin.org)

## What is an Illicit Discharge?

- SANITARY WASTEWATER
- VEHICLE FLUIDS
- HOUSEHOLD CLEANERS
- PAINTS
- SOLVENTS
- WEED KILLERS
- FERTILIZERS
- LAUNDRY WASTEWATER
- SEDIMENT

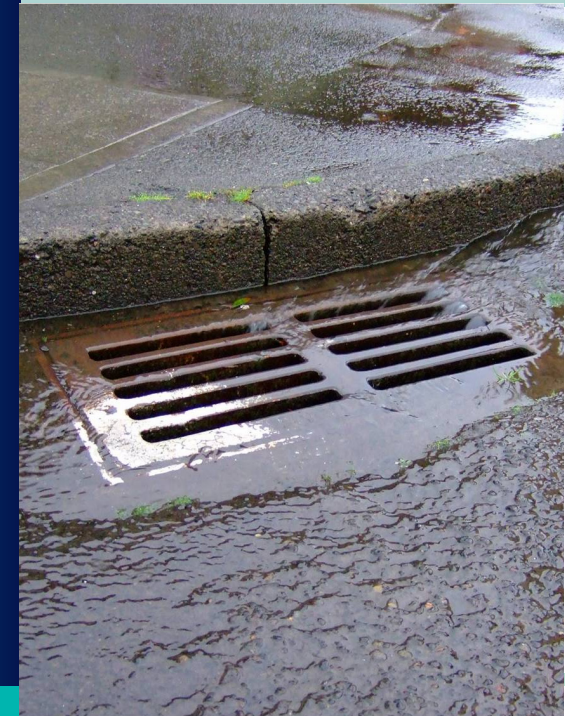
PREVENT ILLICIT DISCHARGES TO PROTECT WATER QUALITY

## Lake County, Indiana MS4

# IDDE

(Illicit Discharge Detection & Elimination)

Lake County Surveyors Office



Lake County Government Center (219)755-3753  
Surveyor's Office  
Municipal Separate Stormwater Sewer System



Lake County Surveyor  
Bill Emerson, Jr.  
Lake County, Indiana

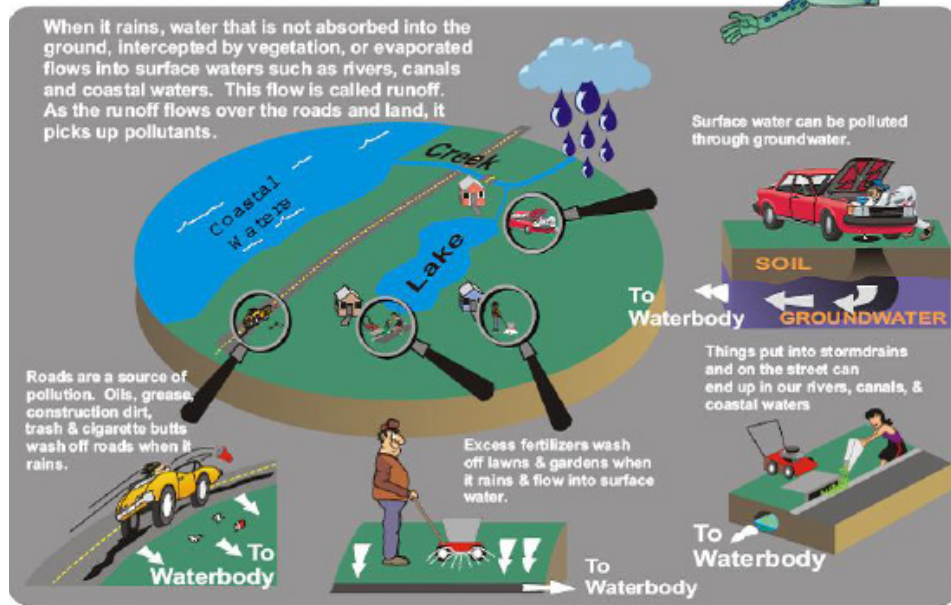
# What is an Illicit Discharge?

An illicit discharge is any discharge to the storm sewer system that is not composed entirely of rain water or groundwater. Examples include dumping of motor vehicle fluids, household hazardous wastes, grass clippings, leaf litter, industrial waste, restaurant wastes or other non-storm water materials into a storm sewer system via a pipe or other direct connection. Sources of illicit connections may include sanitary sewer taps, wash water for laundromats or car washes, and other similar sources.

# Exempted Discharges & Connections

- Water line flushing
- Landscape irrigation
- Rising ground waters
- Uncontaminated groundwater infiltration
- Uncontaminated pumped ground water
- Discharges from potable water source
- Foundation drains
- Air conditioning condensation
- Springs
- Water from crawl space pumps
- Footing drains
- Lawn watering
- Individual residential car washing
  - Biodegradable & eco-friendly soap only
- Flows from riparian habitats and wetlands
- De-chlorinated swimming pool discharges
- Street wash water
- Discharges from fire fighting activities

## The Culprits



## What You Can Do!

- Report any polluters that are dumping or discharging pollutants into the storm drain system by calling MS4 at (219) 755-3753 or filling out a complaint form online.
- Ensure your home does not have any cross-connections between storm and sanitary system.
- Safely dispose of household or garage chemicals. Can bring to Lake County Household Hazardous Waste Collection Events. For a list of events contact Lake County Solid Waste Management District (219) 769-3820
- Follow product specifications when applying outdoor chemicals such as fertilizers and pesticides.
- Never dump any waste products or other inappropriate material into a storm drain or street grate.



**Remember only Rain in the Drain!**

